

ROCKDALE COUNTY COMMUNITY ASSESSMENT 2025

August 1, 2025

HISTORY

Rockdale County in north central Georgia was created from parts of [Henry](#) and [Newton](#) counties in 1870. Its name was inspired by the [granite](#) strata underlying the surface [soil](#) in the area, which was originally inhabited by mound dwellers, and then by [Creek](#) and [Cherokee Indians](#). The first white settlers arrived in Rockdale County during the 1820s.

The only incorporated community in the 131-square-mile county is [Conyers](#), the county seat, although two other communities, Magnet and Milstead, are included on current maps. The county courthouse was built in 1939.

Conyers was incorporated in 1854 but had been inhabited for several decades before that under the name Rockdale. In the 1840s W. D. Conyers, a [Covington](#) banker, helped the Georgia Railway lay track through town by buying the site from a blacksmith, John Holcombe, and deeding it to the railroad.

Notable residents include the actress [Holly Hunter](#), who grew up on her father's farm in Conyers, and E. R. Shipp, a [Pulitzer](#) Prize-winning journalist.

Community Assessment Guidelines

The following information will be researched in order to update the five year community assessment:

1. The demographic make-up of eligible individuals, families and children, including their estimated number, geographic location, and racial and ethnic composition.
2. Child development programs that provide services for low income families in Rockdale County.
3. The estimated number of children with disabilities four years of age or younger, including the types of disabilities and relevant services and resources provided to these children by community agencies.
4. The estimated number of low income elderly people that are in need of supportive services, i.e., transportation, weatherization, emergency assistance, etc.
5. Data regarding the health, education, nutrition and social services needs of eligible low income individuals, children and their families.

6. Gathering data on child care availability to include faith-based programs and charter schools. The report will help to ensure that the options that we choose for parent choice is limited and that our county is doing all we can do by partnering with the LEA. Also, gathering data in Rockdale County will also help us to know about partnership/collaboration opportunities and conversations with families.
7. The education, health, nutrition and social services needs of Head Start families as defined by families of Head Start eligible children, and by institutions in the community that serve young children.
8. The education, health, nutrition and social services needs of eligible individuals and families in Rockdale County
9. Resources in the community that could be used to address the needs of low income individuals, children and their families, including assessments of their availability and accessibility.
10. Most of the research will be focused on Rockdale County since the agency serves 100% Head Start and Early Head Start families.

The community needs assessment will help the agency determine:

1. The grantee's philosophy and its long and short range program objectives.
2. Determine the type of services that are most needed and the program option.
3. Determine the recruitment area that will be served by the grantee if limitations in the amount of resources make it impossible to serve the entire area.

Methodology

In order to represent as diverse a population as possible there were multiple ways to respond to the community needs assessment survey. The survey was designed to collect specific sets of data from respondents to identify and rank needs. Surveys were available via:

- Electronic email
- Agency's website
- Paper

The assessment process started in May 2025. The Executive Director selected team members to head the community assessment team. For qualitative data collection, we engaged partners and board members to assist in the process. We partnered with the

Community Foundation by hosting their Design Thinking Workshop, which was a process that included input on community issues from key stakeholders for the business, education and social service sectors. We also met with ministerial leaders to disseminate the information to their congregants.

Gathering data from the low socio economic population was of the utmost importance because our ultimate goal is to help families in poverty transition to self-sufficiency. We started the data collection process with our Head Start families. Head Start team members collected surveys from over 10% of the families we serve. Additionally, clients were randomly selected when applying for services at the agency. Throughout the year, community support team members collected over 2,500 customer satisfaction surveys.

We thank the hundreds of survey participants, board members, staff and community collaborators for their commitment throughout the community needs assessment. We will provide a summary of this report on our website.

BOARD OF DIRECTORS



The agency has a ten member Board of Directors that is comprised of three groups: representation of one third elected public officials; one third representation from the Low Income (Consumer) Group; and, one third representatives of Private Groups and Interests. The objectives of the Board of Directors and staff are to work with three significant groups in the community: the consumers, the public sector, and the private sector to seek out, identify and address the causes of poverty within the county; to assist the entire community in becoming more responsible to the needs and interests of the poor by mobilizing available resources and striving to bring about institutional sensitivity and removal of artificial barriers for eligible citizens; and to plan and develop a system of priorities from among identified needs and concerns of local residents and address them through programs, projects and activities.

CSA's Head Start& Early Head Start Site locations:

Restoration Storehouse

1400 Parker Road SE

Conyers, Georgia 30094

Head Start Enrollment capacity- 74

Early Head Start Enrollment -40

West Circle

780 West Circle SW

Conyers, Georgia 30012

Head Start Enrollment capacity- 17

Early Head Start Enrollment Capacity – 32

Head Start program applied for the reduction on the preschool Head Start children slots enrollment and converted some of the numbers to providing services to more Early Head Start children. The reduction came about due to result of COVID and changes in the community with families' decision to let their 4 year olds to attend Pre-K at local public schools where their children attend.

HEAD START & EARLY HEAD START

Clayton County CSA's Head Start& Early Head Start Rockdale County is a federally funded program for 163 Head Start (91) & Early Head Start (72) children.

The Rockdale County HS & EHS serves children age's birth to five years of age. The program provides education, health, nutrition,

behavior/mental health, and parent engagement services for children and families that are eligible in Rockdale County. Head Start has 1 Pre-K –Head Start blended classroom and four Head Start classrooms. The Early Head Start has 9 classrooms. Our goal is a two generational approach to helping families to become self-sufficient in order to achieve their life goals. The program also promotes school readiness, family literacy, social competency and parent engagement.

Rockdale County GA



In 2023, Rockdale County, GA had a population of 94.3k people with a median age of 39.2 and a median household income of \$72,349. Between 2022 and 2023 the population of Rockdale County, GA grew from 93,641 to 94,293, a 0.696% increase and its median household income grew from \$68,999 to \$72,349, a 4.86% increase.

The 5 largest ethnic groups in Rockdale County, GA are Black or African American (Non-Hispanic) (57.1%), White (Non-Hispanic) (25.4%), Two+ (Non-Hispanic) (4.27%), Two+ (Hispanic) (3.54%), and Other (Hispanic) (3.43%).

None of the households in Rockdale County, GA reported speaking a non-English language at home as their primary shared language. This does not consider the potential multi-lingual nature of households, but only the primary self-reported language spoken by all members of the household.

95.4% of the residents in Rockdale County, GA are U.S. citizens.

The largest universities in Rockdale County, GA are [Georgia Career Institute](#) (430 degrees awarded in 2022).

In 2023, the median property value in Rockdale County, GA was \$256,600, and the homeownership rate was 65.8%.

Most people in Rockdale County, GA drove alone to work, and the average commute time was 34.7 minutes. The average car ownership in Rockdale County, GA was 2 cars per household.

Rockdale County, GA borders [DeKalb County, GA](#), [Gwinnett County, GA](#), [Henry County, GA](#), [Newton County, GA](#), and [Walton County, GA](#).

Population & Diversity

Rockdale County, GA is home to a population of 94.3k people, from which 95.4% are citizens. As of 2023, 10.3% of Rockdale County, GA residents were born outside of the country (9.72k people).

In 2023, there were 2.25 times more Black or African American (Non-Hispanic) residents (53.8k people) in Rockdale County, GA than any other race or ethnicity. There were 23.9k White (Non-Hispanic) and 4.03k

Two+ (Non-Hispanic) residents, the second and third most common ethnic groups.

Major Cities and Towns in Rockdale County, Georgia -Conyers

Conyers, the county seat of Rockdale County, is a vibrant city with a rich history and a strong sense of community. Established in 1854, Conyers was originally a small railroad town, named after Dr. W.D. Conyers, a local physician and railroad promoter. The arrival of the Georgia Railroad played a significant role in the city's growth, transforming it into a hub for commerce and transportation. Over the years, Conyers has evolved from its rural beginnings into a thriving suburban city that retains its historical charm while embracing modern development. The city's location, just 24 miles east of Atlanta, makes it an attractive place for residents who want to enjoy the benefits of suburban living with easy access to the amenities of a major metropolitan area.

Key Information

- **Area:** Approximately 11.9 square miles
- **Population:** Around 17,000 (latest census)
- **Zip Codes:** 30012, 30013, 30094
- **Latitude:** 33.6676° N
- **Longitude:** 84.0177° W

Lakeview Estates

Lakeview Estates is a small, unincorporated community in Rockdale County, located to the northwest of Conyers. The community was established in the mid-20th century as a residential area, primarily catering to families looking for affordable housing near the growing city of Conyers. Over the years, Lakeview Estates has developed a reputation as a quiet, close-knit community with a strong emphasis on family life. Its location near Interstate 20 provides residents with easy access to the larger metropolitan area of Atlanta, while still offering the peace and tranquility of suburban living.

Key Information

- **Area:** Approximately 0.5 square miles
- **Population:** Around 2,600 (latest census)
- **Zip Codes:** 30012
- **Latitude:** 33.6871° N
- **Longitude:** 84.0411° W

Schools and Landmarks

Lakeview Estates is served by the Rockdale County Public Schools system, with students typically attending schools in nearby Conyers, such as Rockdale County High School and Conyers Middle School. The community is primarily residential, with few commercial or recreational landmarks within its boundaries. However, its proximity to Conyers allows residents to enjoy the amenities of the larger city, including parks, shopping centers, and cultural events. The nearby Pine Log Park provides outdoor recreational opportunities, with walking trails and picnic areas that are popular with families in the area.

CITIZENS

As of 2023, 95.4% of Rockdale County, GA residents were US citizens, which is higher than the national average of 93.4%. In 2022, the percentage of US citizens in Rockdale County, GA was 96%, meaning that the rate of citizenship has been decreasing.

Data from the Census Bureau ACS 5-year Estimate

DIVERSITY -RACE & ETHNICITY

In 2023, there were 2.25 times more Black or African American (Non-Hispanic) residents (53.8k people) in Rockdale County, GA than any other race or ethnicity. There were 23.9k White (Non-Hispanic) and 4.03k Two+ (Non-Hispanic) residents, the second and third most common ethnic groups.

10.6% of the people in Rockdale County, GA are Hispanic (9.99k people).

GLOBAL DIVERSITY

In 2022, the most common birthplace for the foreign-born residents of Georgia was Mexico, the natal country of 222,301 Georgia residents, followed by India with 103,637 and Jamaica with 49,864.

FOREIGN BORN POPULATION

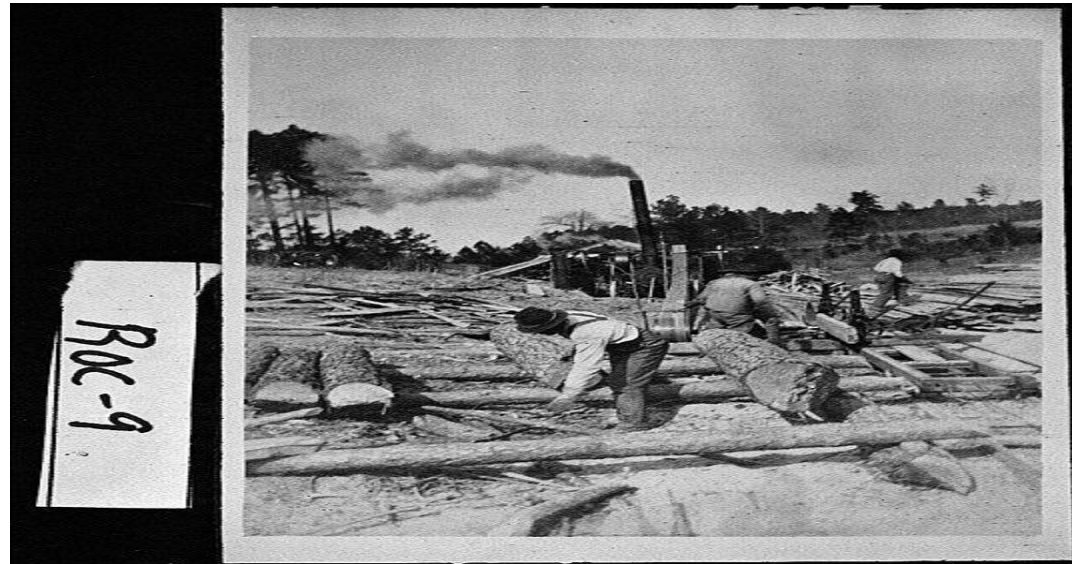
As of 2023, 10.3% of Rockdale County, GA residents (9.72k people) were born outside of the United States, which is lower than the national average of 13.8%. In 2022, the percentage of foreign-born citizens in Rockdale County, GA was 9.87%, meaning that the rate has been increasing.

MILITARY – VETERANS

Rockdale County, GA has a large population of military personnel who served in Gulf War (2001-), 1.11 times greater than any other conflict.

ECONOMY

During the heyday of **textile manufacturing** in the South, Rockdale County was a prosperous place with several mill towns. The decline of those mills signaled the drastic reduction—often the disappearance—of the communities surrounding them. However, the construction of **Interstate 20** in the 1960s enabled the county to grow and thrive once more. Today the county is a bedroom community for many who are employed in the metropolitan **Atlanta** area, and the historic district, “Olde Town Conyers,” draws visitors to shop in its boutiques and visit its museums and gardens.



Currently, the economy of Rockdale County, GA employs 44.8k people. The largest industries in Rockdale County, GA are Retail Trade (5,160 people), Health Care & Social Assistance (4,941 people), and Manufacturing (4,901 people), and the highest paying industries are Information (\$76,042), Professional, Scientific, & Technical Services (\$69,417), and Finance & Insurance (\$60,175).

Males in Georgia have an average income that is 1.35 times higher than the average income of females, which is \$58,988. The income inequality in Georgia (measured using the Gini index) is 0.474, which is lower than the national average.

EMPLOYMENT

From 2022 to 2023, employment in Rockdale County, GA grew at a rate of 3.48%, from 43.3k employees to 44.8k employees.

The most common job groups, by number of people living in Rockdale County, GA, are Office & Administrative Support Occupations (6,419 people), Sales & Related Occupations (3,973 people), and Management Occupations (3,650 people)

From 2022 to 2023, employment in Rockdale County, GA grew at a rate of 3.48%, from 43.3k employees to 44.8k employees.

The most common job groups, by number of people living in Rockdale County, GA, are Office & Administrative Support Occupations (6,419 people), Sales & Related Occupations (3,973 people), and Management Occupations (3,650 people).

WORKFORCE – EMPLOYMENT INDUSTRIES

From 2022 to 2023, employment in Rockdale County, GA grew at a rate of 3.48%, from 43.3k employees to 44.8k employees.

The most common employment sectors for those who live in Rockdale County, GA, are Retail Trade (5,160 people), Health Care & Social Assistance (4,941 people), and Manufacturing (4,901 people).

Data from American Community Survey 2023

EMPLOYMENT BY INDUSTRY SECTOR

As of February 2023, there are 4.87M people employed in Georgia. This represents a 2.94% increase in employment when compared to February 2022.

Right after the beginning of the COVID-19 pandemic, during April 2020, a general dip can be seen across industry sectors, resulting in an overall decline in employment by 11.9%.

US SENATORS

Jon Ossoff and Raphael Warnock are the senators currently representing Georgia.

In the United States, senators are elected to 6-year terms with the terms for individual senators staggered.

EDUCATION

In 2022, universities in Rockdale County, GA awarded 430 degrees. The student population of Rockdale County, GA in 2022 is skewed towards women, with 18 male students and 575 female students.

Most students graduating from Universities in Rockdale County, GA are Black or African American (255 and 59.3%), followed by White (134 and 31.2%), Hispanic or Latino (30 and 6.98%), and Asian (9 and 2.09%).

The largest universities in Rockdale County, GA by number of degrees awarded are Georgia Career Institute (430 and 100%).

The most popular majors in Rockdale County, GA are Aesthetician & Skin Care Specialist (180 and 41.9%), Nail Specialist & Manicurist (124 and 28.8%), and General Cosmetology (76 and 17.7%).

ADMISSION & ENROLLMENT

In 2022 there were 593 students enrolled in Rockdale County, GA, 3.04% men and 97% women.

By race, the largest number of students enrolled was concentrated in Black or African American with 396 records, of which 97% were women and 3.03% men.

Data from the Integrated Postsecondary Education Data System (IPEDS) Fall Enrollment

In 2022 there were 593 students enrolled in Rockdale County, GA, 3.04% men and 97% women.

By race, the largest number of students enrolled was concentrated in Black or African American with 396 records, of which 97% were women and 3.03% men.

COMPLETION

In 2022, the most common concentration for 1 to 2 Year Postsecondary Certificate recipients in Rockdale County, GA was Aesthetician & Skin Care Specialist with 180 degrees awarded.

This visualization illustrates the percentage of students graduating with a 1 to 2 Year Postsecondary Certificate from schools in Rockdale County, GA according to their major.

Data from the Integrated Postsecondary Education Data System (IPEDS) Completions

GEORGIA CAREER INSTITUTE

In 2022, the institution with the largest number of graduating students was Georgia Career Institute with 430 degrees awarded.

STUDENT DIVERSITY

In 2022, 14 men were awarded degrees from institutions in Rockdale County, GA, which is 0.0337 times less than the 416 female students who received degrees in the same year.

In 2022 the most common race/ethnicity group awarded degrees at institutions was Black or African American students. These 255 degrees mean that there were 1.9 times more degrees awarded to Black or African American students than the next closest race/ethnicity group, White, with 134 degrees awarded.

WORKING POPULATION

In 2022, 1.08% of men over 25 years of age had not completed any academic degree (no schooling), while 1.03% of women were in the same situation.

EDUCATION ATTAINMENT

The most common educational levels obtained by the working population in 2022 were High School or Equivalent (2.33M), Some college (1.78M), and Bachelors Degree (1.56M).

HOUSING & LIVING

The median property value in Rockdale County, GA was \$256,600 in 2023, which is 0.846 times smaller than the national average of \$303,400. Between 2022 and 2023 the median property value increased from **\$221,800 to \$256,600**, a 15.7% increase. The homeownership rate in Rockdale County, GA is 65.8%, which is approximately the same as the national average of 65%. People in Rockdale County, GA have an average commute time of 34.7 minutes, and they drove alone to work. Car ownership in Rockdale County, GA is approximately the same as the national average, with an average of 2 cars per household.

Median household income in Rockdale County, GA is \$72,349. In 2023, the tract with the highest Media

Household Income in Rockdale County, GA was Census Tract 604.06 with a value of \$102,422, followed by Census Tract 604.07 and Census Tract 603.06, with respective values of \$80,385 and \$78,448.

In 2023, 15.8% of the population was living with severe housing problems in Rockdale County, GA. From 2014 to 2023, the indicator declined 1.73%.

RENT VERSUS OWN

In 2023, 65.8% of the housing units in Rockdale County, GA were occupied by their owner. This percentage grew from the previous year's rate of 65.6%.

HOME OWNERS WITH MORTGAGE

In 2023, 71.9% of the housing units in Rockdale County, GA were occupied by their homeowners with mortgage. This percentage grew from the previous year's rate of 71.2%.

EQUITY

In 2023, the tract with the highest Median Household Income (Total) in Rockdale County, GA was Census Tract 604.06 with a value of \$102,422, followed by Census Tract 604.07 and Census Tract 603.06, with respective values of \$80,385 and \$78,448

In 2023, the tract with the highest Median Household Income (**White**) in Rockdale County, GA was Census Tract 603.06 with a value of \$118,125, followed by Census Tract 604.06 and Census Tract 604.07, with respective values of \$98,750 and \$85,250.

In 2023, the tract with the highest Median Household Income (**Black**) in Rockdale County, GA was Census Tract 602.01 with a value of \$121,370, followed by Census Tract 604.06 and Census Tract 604.03, with respective values of \$109,342 and \$87,625.

In 2023, the tract with the highest Median Household Income (**Two Or More**) in Rockdale County, GA was Census Tract 604.03 with a value of \$128,417, followed by Census Tract 602.01 and Census Tract 604.07, with respective values of \$68,621 and \$63,906.

In 2023, the tract with the highest Median Household Income (**White Non-Hispanic**) in Rockdale County, GA was Census Tract 603.06 with a value of \$118,125, followed by Census Tract 604.06 and Census Tract 604.07, with respective values of \$98,750 and \$85,250.

HOUSEHOLD INCOME

In 2023, the median household income of the 34k households in Rockdale County, GA grew to \$72,349 from the previous year's value of \$68,999.

WAGE DISTRIBUTION

In 2022, the income inequality in Georgia was 0.474 according to the GINI calculation of the wage distribution. Income inequality had a 0.224% decline from 2021 to 2022, which means that wage distribution grew somewhat more even. The GINI for Georgia was lower

than the national average of 0.478. In other words, wages are distributed more evenly in Georgia in comparison to the national average.

TRANSPORTATION

In 2023, 74.8% of workers in Rockdale County, GA drove alone to work, followed by those who worked at home (12.1%) and those who carpooled to work (9.33%).

COMMUTE TIME

Using averages, employees in Rockdale County, GA have a longer commute time (34.7 minutes) than the normal US worker (26.6 minutes). Additionally, 4.67% of the workforce in Rockdale County, GA has "super commutes" in excess of 90 minutes.

Rockdale county resident own average of 2 cars

POVERTY

In 2023, 15.8% of the population was living with severe housing problems in Rockdale County, GA. From 2014 to 2023, the indicator declined 1.73%.

0.7% of the population for whom poverty status is determined in Rockdale County, GA (10k out of 93.4k people) live below the poverty line, a number that is lower than the national average of 12.4%. The largest demographic living in poverty are Females 35 - 44, followed by Females 18 - 24 and then Females < 5.

The most common racial or ethnic group living below the poverty line in Rockdale County, GA is Black, followed by White and Hispanic.

The Census Bureau uses a set of money income thresholds that vary by family size and composition to determine who classifies as impoverished. If a family's total income is less than the family's threshold then that family and every individual in it is considered to be living in poverty.

Data from American Community Survey 2023

CHILDREN POVERTY

In 2023, 22.7% of the children were living in poverty in Rockdale County, GA. From 2014 to 2023, the indicator declined 4.7%.

Kid's Count Data

HEALTH

85.9% of the population of Rockdale County, GA has health coverage, with 42.5% on employee plans, 16.1% on Medicaid, 11.1% on Medicare, 14.2% on non-group plans, and 2.02% on military or VA plans. Primary care physicians in Rockdale County, GA see 1467 patients per year on average, which represents a 4.94% increase from the previous year (1398 patients). Compare this to dentists who see 1289 patients per year, and mental health providers who see 574 patients per year.

By gender, of the total number of insured persons, 46.5% were men and 53.5% were women.

Dentists in Rockdale County, GA see an average of 1,289 patients per year. This represents a 0.77% decrease from the previous year (1,299 patients)

Mental health providers in Rockdale County, GA see an average of 574 patients per year. This represents a 5.9% decrease from the previous year (610 patients).

Other primary care providers in Rockdale County, GA see an average of 1,023 patients per year. This represents a 2.4% increase from the previous year (999 patients).

Data from American Community Survey 2023

HEALTH CARE DIVERSITY

In 2023, insured persons according to age ranges were distributed in 25.5% under 18 years, 19.7% between 18 and 34 years, 39.5% between 35 and 64 years, and 15.2% over 64 years.

By gender, of the total number of insured persons, 46.5% were men and 53.5% were women.

UNINSURED

Between 2022 and 2023, the percent of uninsured citizens in Rockdale County, GA declined by 4.54% from 14.8% to 14.1%.

HEALTH INDICATORS

In 2023, the number of deaths among residents under age 18 per 100,000 population was 57.4 in Rockdale County, GA.

DIET & EXERCISE

In 2023, the percentage of the adult population (age 18 and older) that reports a body mass index (BMI) greater than or equal to 30 kg/m² (age-adjusted) was 43.3% in Rockdale County, GA.

In 2023, the percentage of population with adequate access to locations for physical activity was 82.7% in Rockdale County, GA.

In 2023, the index of factors that contribute to a healthy food environment (from 0-worst to 10-best) was 7.6 in Rockdale County, GA.

In 2023, the percentage of population who lack adequate access to food was 9.3% in Rockdale County, GA.

In 2023, the percentage of population who are low-income and do not live close to a grocery store was 13.3% in Rockdale County, GA.

In 2023, the percentage of adults age 18 and over reporting no leisure-time physical activity (age-adjusted) was 28.7% in Rockdale County, GA.

Data from American Community Survey 2023

ALCOHOL, DRUG & TOBACCO

In 2023, the percentage of adults who are current smokers (age-adjusted) was 17.5% in Rockdale County, GA.

In 2023, the number of drug poisoning deaths per 100,000 population was 15 in Rockdale County, GA.

In 2023, the percentage of adults reporting binge or heavy drinking (age-adjusted) was 15.1% in Rockdale County, GA.

In 2023, the percentage of driving deaths with alcohol involvement was 19.1% in Rockdale County, GA.

Data from American Community Survey 2023

CLINICAL CARE

In 2023, the percentage of population under age 65 without health insurance was 15.9% in Rockdale County, GA.

ACCESS TO CARE-

In 2023, the percentage of adults under age 65 without health insurance was 19.6% in Rockdale County, GA.

In 2023, the percentage of children under age 19 without health insurance was 6.5% in Rockdale County, GA.

In 2023, the ratio of population to primary care providers other than physicians was 1.02k in Rockdale County, GA.

In 2023, the ratio of population to dentists was 1.29k in Rockdale County, GA.

In 2023, the ratio of population to primary care physicians was 1.47k in R In 2023, the ratio of population to mental health providers was 574 in Rockdale County, GA. Rockdale County, GA

Data from American Community Survey 2023

QUALITY OF CARE-

In 2023, the rate of hospital stays for ambulatory-care sensitive conditions per 100,000 Medicare enrollees was 3.52k in Rockdale County, GA

In 2023, the percentage of female Medicare enrollees ages 65-74 that received an annual mammography screening was 40% in Rockdale County, GA.

Data from American Community Survey 2023

Populations and People

Age and Sex

Median Age in Rockdale County, Georgia

Estimate for Median Age in Rockdale County, Georgia. 40.2. plus or minus 1.7

Median Age in Georgia

Estimate for Median Age in Georgia. 37.9. plus or minus 0.2

2023 American Community Survey 1-Year Estimates

Language Spoken at Home

Language Other Than English Spoken at Home in Rockdale County, Georgia

Estimate for Language Other Than English Spoken at Home in Rockdale County, Georgia. N. plus or minus N

Language Other Than English Spoken at Home in Georgia

Estimate for Language Other Than English Spoken at Home in Georgia. 15.7%. plus or minus 0.3%

[|2023 American Community Survey 1-Year Estimates](#)

Native and Foreign-Born

Foreign-Born population in Rockdale County, Georgia

Estimate for Foreign-Born population in Rockdale County, Georgia. 12.5%. plus or minus 3.0%

Foreign-Born population in Georgia

Estimate for Foreign-Born population in Georgia. 11.6%. plus or minus 0.2%

[|2023 American Community Survey 1-Year Estimates](#)

Foreign-Born Population in Rockdale County, Georgia

Naturalized U.S. citizen - 55.1% Not a U.S. citizen - 44.9%

[|2023 American Community Survey 1-Year Estimates](#)

Older Population

Estimate for 65 Years and Older in Rockdale County, Georgia. 15.9%. plus or minus 0.4%

65 Years and Older in Georgia

Estimate for 65 Years and Older in Georgia. 15.4%. plus or minus 0.1%

[|2023 American Community Survey 1-Year Estimates](#)

Older Population by Age in Rockdale County, Georgia

65 to 74 years - 9.8%,

75 to 84 years - 4.7%

85 years and over - 1.4%

[2023 American Community Survey 1-Year Estimates](#)

Residential Mobility

Moved From a Different State in the Last Year in Rockdale County, Georgia

Estimate for Moved From a Different State in the Last Year in Rockdale County, Georgia. N. plus or minus N

Moved From a Different State in the Last Year in Georgia

Estimate for Moved From a Different State in the Last Year in Georgia. 2.8%. plus or minus 0.1%

[2023 American Community Survey 1-Year Estimates](#)

Veterans

Veterans in Rockdale County, Georgia

Estimate for Veterans in Rockdale County, Georgia. 8.7%. plus or minus 1.8%, **7.2% \pm 0.2%**

Veterans in Georgia

Estimate for Veterans in Georgia. 7.2%. plus or minus 0.2%

[2023 American Community Survey 1-Year Estimates](#)

Veterans by Sex in Rockdale County, Georgia

Male - 72.1%, Female - 27.9%

Income and Earnings

Median Household Income in Rockdale County, Georgia

Estimate for Median Household Income in Rockdale County, Georgia. \$82,339. plus or minus \$11,614

Median Household Income in Georgia

Estimate for Median Household Income in Georgia. \$74,632. plus or minus \$833

[*2023 American Community Survey 1-Year Estimates*](#)

Median Income by Types of Families in Rockdale County, Georgia

Families - \$90,019 , Married-couple families - \$112,543, Nonfamily households - \$41,511

[*2023 American Community Survey 1-Year Estimates*](#)

Poverty

All people in Rockdale County, Georgia

Estimate for Poverty, All people in Rockdale County, Georgia. 11.8%. plus or minus 3.2%

Poverty, All people in Georgia

Estimate for Poverty, All people in Georgia. 13.6%. plus or minus 0.4%

Poverty by Age in Rockdale County, Georgia

Under 18 years - 10.2%, 18 to 64 years - 11.9%, 65 years and over - 13.8%

[2023 American Community Survey 1-Year Estimate](#)

Education

Estimate for Bachelor's Degree or Higher in Rockdale County, Georgia. 36.5%. plus or minus 3.8%

Estimate for Bachelor's Degree or Higher in Georgia. 35.4%. plus or minus 0.3%

[2023 American Community Survey 1-Year Estimates](#)

Education Attainment (Population 25 Years and Older) in Rockdale County, Georgia

High school or equivalent degree - 27.0%, Some college, no degree - 18.6% Associate's degree - 9.9%, Bachelor's degree - 21.9%, Graduate or professional degree - 14.6%

[2023 American Community Survey 1-Year Estimates](#)

School Enrollment

School Enrolled Population Enrolled in Kindergarten to 12th Grade in Rockdale County, Georgia

Estimate for School Enrolled Population Enrolled in Kindergarten to 12th Grade in Rockdale County, Georgia. 71.2%. plus or minus 5.4%

School Enrolled Population Enrolled in Kindergarten to 12th Grade in Georgia

Estimate for School Enrolled Population Enrolled in Kindergarten to 12th Grade in Georgia. 69.8%. plus or minus 0.5%

[2023 American Community Survey 1-Year Estimates](#)

School Enrollment (Population 3 Years and Over Enrolled in School) in Rockdale County, Georgia

Share / Embed

Nursery school 4.1% , preschool - 3.7%, Kindergarten to 12th grade - 71.2%, College/ undergraduate - 21.1%, Graduate, professional school - 4.0%

Employment

Local, state, and federal government workers in Rockdale County, Georgia

Estimate for Local, state, and federal government workers in Rockdale County, Georgia. 15.8%. plus or minus 3.1%

[2023 American Community Survey 1-Year Estimates](#)

Class of Worker in Rockdale County, Georgia

Employee of private company workers - 66.1%, Self-employed in own incorporated business workers - 5.3%, Private not-for-profit wage and salary workers - 6.5%Local, state, and federal government workers - 15.8%, Self-employed in own not incorporated business workers and unpaid family workers - 6.2%

[2023 American Community Survey 1-Year Estimates](#)

Commuting

Average travel time to work (in minutes) in Rockdale County, Georgia

Estimate for Average travel time to work (in minutes) in Rockdale County, Georgia. 35.7. plus or minus 2.7

Average travel time to work (in minutes) in Georgia

Estimate for Average travel time to work (in minutes) in Georgia. 28.7. plus or minus 0.2

[2023 American Community Survey 1-Year Estimates](#)

Means of Transportation to Work (Workers 16 Years and Over) in Rockdale County, Georgia

Mean of Transportation	Drove alone	Carpool -	Public Transportation	Walked	Bicycle	Taxicab, motorcycle, or other means	Worked from home
Percentage	74.7%	8.4%	0.2%	1.0%	0.0%	4.4%	11.3%

[2023 American Community Survey 1-Year Estimates](#)

Employment and Labor Force Status

Employment Rate in Rockdale County, Georgia

Estimate for Employment Rate in Rockdale County, Georgia. 58.7%. plus or minus 3.4%

Employment Rate in Georgia

Estimate for Employment Rate in Georgia. 60.6%. plus or minus 0.3%

[2023 American Community Survey 1-Year Estimates](#)

Industry-

Industry for the Civilian Employed Population 16 Years and Over in Rockdale County, Georgia

Education al services, and health care and social assistance -	Professional , scientific, and management , and administrative and waste management services	Retail trade	Manufact uring	Arts, entertainment, and recreation, and accommodati on and food services -	Constructi on	Transportati on and warehousing , and utilities	Finance and insuranc e, and real estate and rental and leasing	Public administrati on	Other services, except public administration
25.5%	14.4%	12.6%	8.4%	7.4%	6.6%	6.1%	5.7%	5.5%	3.2%

[2023 American Community Survey 1-Year Estimates](#)

Occupation

Occupation for the Civilian Employed Population 16 Years and Over in Rockdale County, Georgia

Occupation	Management, business, science and arts occupations	Sales and office occupations	Service occupations	Production, transportation, and material moving occupations	693Natural resources, construction, and maintenance occupations -
Numbers	19,148,	9,254	8,265	5,693	3,337

[2023 American Community Survey 1-Year Estimates](#)

Work Experience

Mean Usual Hours Worked for Workers in Rockdale County, Georgia

Estimate for Mean Usual Hours Worked for Workers in Rockdale County, Georgia. 38.8. plus or minus 1.1

Mean Usual Hours Worked for Workers in Georgia

Estimate for Mean Usual Hours Worked for Workers in Georgia. 39.1. plus or minus 0.1

Mean Usual Hours Worked for Workers by Sex in Rockdale County, Georgia

Male - 39.6, Female - 38.1

[2023 American Community Survey 1-Year Estimates](#)

Housing -Financial Characteristics

Median Gross Rent in Rockdale County, Georgia

Estimate for Median Gross Rent in Rockdale County, Georgia. \$1,553. plus or minus \$149

Median Gross Rent in Georgia

Estimate for Median Gross Rent in Georgia. \$1,400. plus or minus \$14

[2023 American Community Survey 1-Year Estimates](#)

Homeownership Rate

Homeownership Rate in Rockdale County, Georgia

Estimate for Homeownership Rate in Rockdale County, Georgia. 76.1%. plus or minus 4.3%

Homeownership Rate in Georgia

Estimate for Homeownership Rate in Georgia. 66.1%. plus or minus 0.4%

[2023 American Community Survey 1-Year Estimates](#)

Housing Value in Rockdale County, Georgia [2023 American Community Survey 1-Year Estimates](#)

House Value	Less than \$50,000	\$50,000 to \$99,999	\$100,000 to \$149,999	\$150,000 to \$199,999	\$200,000 to \$299,999	\$300,000 to \$499,999	\$500,000 to \$999,999	\$1,000,000 or more
Percentage	3.6%,	1.8%	1.7%	8.5%	25.8%	47.5%	10.4%	0.5%

Housing Units

Total Housing Units in Rockdale County, Georgia

Estimate for Total Housing Units in Rockdale County, Georgia. **35,427.**

Total Housing Units in Georgia

Estimate for Total Housing Units in Georgia. **4,410,956.**

Housing Occupancy In Rockdale County, Georgia

Occupied housing units - 33,114

Vacant housing units - 2,313

Occupancy Characteristics

Occupied Housing Units in Rockdale County, Georgia

Estimate for Occupied Housing Units in Rockdale County, Georgia. **33,114.**

Rockdale County, Georgia

Owner Occupied Housing Units by Types of Households in Rockdale County, Georgia

Married-couple family - 13,932 Male householder, no spouse present - 1,489 Female householder, no spouse present - 5,637

2023 American Community Survey 1-Year Estimates

Owner/Renter (Householder) Characteristics

Estimate for Moved 2021 or Later Into Occupied Housing Unit in Rockdale County, Georgia. 22.1%. plus or minus 4.6%

Moved 2021 or Later Into Occupied Housing Unit in Georgia

Estimate for Moved 2021 or Later Into Occupied Housing Unit in Georgia. 27.7%. plus or minus 0.4%

[2023 American Community Survey 1-Year Estimates](#)

Moved 2021 or Later Into Occupied Housing Unit by Type of Units in Rockdale County, Georgia

Owner-occupied housing units - 12.4%, Renter-occupied housing units - 52.9%

[2023 American Community Survey 1-Year Estimates](#)

Physical Characteristics

Estimate for Occupied Housing Units with Four or More Bedrooms in Rockdale County, Georgia. 41.4%. plus or minus 5.1%

Occupied Housing Units with Four or More Bedrooms in Georgia

Estimate for Occupied Housing Units with Four or More Bedrooms in Georgia. 30.5%. plus or minus 0.4%

[2023 American Community Survey 1-Year Estimates](#)

Bedrooms in Occupied Housing Units in Rockdale County, Georgia

No bedroom - 2.2%, One bedroom - 2.0%, 2 or 3 bedrooms - 54.3%, 4 or more bedrooms - 41.4%

[2023 American Community Survey 1-Year Estimates](#)

Vacancy

Estimate for Vacant Housing Units in Rockdale County, Georgia. 2,313.

[2020 Decennial Census](#)

Health -Disability

Estimate for Disabled Population in Rockdale County, Georgia. 9.8%. plus or minus 1.5%

Disabled Population in Georgia

Estimate for Disabled Population in Georgia. 13.5%. plus or minus 0.2%

[2023 American Community Survey 1-Year Estimates](#)

Types of Disabilities in Rockdale County, Georgia

Disability Types	Hearing difficulty	Vision difficulty	Cognitive difficulty	Ambulatory difficulty	Self-care difficulty	Independent living difficulty
Percentage	10%	3.0%	1.4%	4.3%	5.4%	2.2%

[2023 American Community Survey 1-Year Estimates](#)

Fertility

Women 15 to 50 years old in Rockdale County, Georgia

Estimate for Women 15 to 50 years old in Rockdale County, Georgia. N. plus or minus N

Women 15 to 50 years old in Georgia

Estimate for Women 15 to 50 years old in Georgia. 2,708,019. plus or minus 6,909

[2023 American Community Survey 1-Year Estimates](#)

Health Insurance

Without Health Care Coverage in Rockdale County, Georgia

Estimate for Without Health Care Coverage in Rockdale County, Georgia. 11.1%. plus or minus 2.6%

Without Health Care Coverage in Georgia

Estimate for Without Health Care Coverage in Georgia. 11.4%. plus or minus 0.2%

[2023 American Community Survey 1-Year Estimates](#)

Families and Living Arrangements

Estimate for Under 18 years old in Rockdale County, Georgia. 23.2%. plus or minus 0.3%

Estimate for Under 18 years old in Georgia. 23.0%. plus or minus 0.1%

[2023 American Community Survey 1-Year Estimates](#)

Children

Children Under 18 by Age Range in Rockdale County, Georgia

Under 5 years - 4.5% 5 to 14 years - 13.4% 15 to 17 years - 5.3%

[2023 American Community Survey 1-Year Estimates](#)

Families and Household Characteristics

Average Family Size in Rockdale County, Georgia

Estimate for Average Family Size in Rockdale County, Georgia. 3.13. plus or minus 0.18

Average Family Size in Georgia

Estimate for Average Family Size in Georgia. 3.21. plus or minus 0.02

[2023 American Community Survey 1-Year Estimates](#)

Total Households by Type of Households in Rockdale County, Georgia

Married-couple family household - 44.7%, Male householder, no spouse present, family household - 13.3%, Female householder, no spouse present, family household - 33.5%

[2023 American Community Survey 1-Year Estimates](#)

Marital Status and Marital History

Never Married in Rockdale County, Georgia

Estimate for Never Married in Rockdale County, Georgia. N. plus or minus N 35.3% \pm 0.3%

Never Married in Georgia

Estimate for Never Married in Georgia. 35.3%. plus or minus 0.3%

[2023 American Community Survey 1-Year Estimates](#)

Race and Ethnicity

Marital Status by Race & Ethnicity in Rockdale County, Georgia [*2023 American Community Survey 1-Year Estimates*](#)

Rockdale County	Number	Georgia	Number
American Indian and Alaska Native alone	312.	American Indian and Alaska Native alone	50,618.
Asian alone in	1,542	Asian alone in	479,028
Black or African American	54,409	Black or African American	. 3,320,513.
Hispanic or Latino (of any race	9,540	Hispanic or Latino (of any race	1,123,457.
Native Hawaiian and Other Pacific Islander alone	83	Native Hawaiian and Other Pacific Islander alone	. 7,299.
White alone, not Hispanic or Latino	24,500	White alone, not Hispanic or Latino	5,362,156
Some Other Race	5,358	Some Other Race	555,059.
Two or More Races	6,205	Two or More Races	743,908.
White	25,661	White	5,555,483.

INFRASTRUCTURE IN ROCKDALE COUNTY

Improving Mobility in Rockdale \$163 million in i federal and state funds programmed by ARC through 2028 to improve transportation across Rockdale County. Key projects include: I-20 at SR 138/SR 20 Interchange – This interchange will be rebuilt and widened to handle future traffic projections and improve safety. Sigman Road Widening – This key corridor will be widened from two to four lanes from Irwin Bridge Road to SR 138 (Walnut Grove Road). It's Phase 3 of improvements to Sigman Road corridor that will improve access to Rockdale General Hospital and the Georgia International Horse Park. Honey Creek Road Bridge Replacement – This project will replace Honey Creek Road Bridge at Snapping Shoals Creek. The bridge has a posted weight limit of 7 tons, preventing use by fire department, EMS, and school buses. 326,000 fewer miles traveled by the 65 Rockdale residents who participated in the Georgia Commute Options program, saving them \$150,718 in fuel and vehicle maintenance costs. Securing a Sustainable Future T he Metropolitan North Georgia Water Planning District and the Council for Quality Growth began a cooperative effort to support the effective management of storm water that protects human life, property, and natural resources. This included a first-of-its-kind series of workshops to gather leaders from local government and the development community to build trust across disciplines and collaborate to improve the region's storm water management practices and policies for a more resilient future.

REGIONAL IMPACT

Flint River Gateway Trails ARC and four South Metro communities received \$65 million in grants from the U.S. DOT to develop a network of multi-use trails along the Flint River linking the Atlanta Beltline, the cities of East Point, College Park, and Hapeville, and Clayton County. The project will provide critical connections to jobs and services for communities that have long been divided by

highways and other infrastructure. Charging & Fueling Infrastructure ARC has received \$6.1 million grant funding to install EV chargers across metro Atlanta, with a focus on communities where EV charging is scarce. This is one step we are taking to support an equitable EV transition.

2 Goal Healthy, safe, livable communities in the Atlanta Metro area. Improving Quality of Life for Rockdale County Residents of All Ages and Abilities \$717,246 in state and federal funds to Rockdale Senior Services for direct services provided exclusively to Rockdale residents, including Congregate and home-delivered meals In-home support services Transportation Case management Making Rockdale an Even Better Place to Live, Work, and Play Livable Centers Initiative – 25th Anniversary ARC is celebrating the 25th anniversary of the Livable Centers Initiative (LCI), an innovative program that has helped communities across the Atlanta region re-imagine themselves as vibrant, walkable, mixed-use centers. LCI communities are designed to offer increased mobility options, encourage healthy lifestyles, and provide improved access to jobs and services. Rockdale's LCI communities include the City of Conyers.

REGIONAL IMPACT

Regional Resilience Improvement Plan ARC has received a \$1.5 million federal PROTECT grant to develop a Regional Resilience Improvement Plan. This plan, the first of its kind for metro Atlanta, will identify roads, bridges and other areas that are particularly vulnerable to damage from flooding, extreme temperatures, and drought. The plan will also recommend specific mitigation measures, such as retrofitting roads and bridges to modifying construction design standards. Climate Action Plan ARC is developing the region's first Climate Action Plan. It's a roadmap to create a sustainable and resilient future for all of us, while identifying steps needed to

achieve the federal target of net zero greenhouse gas emissions by 2050. 3. Goal A competitive economy that is inclusive, innovative, and resilient. Workforce Solutions: Connecting talent with opportunity 77 Rockdale County residents received training through Work Source Atlanta Regional's Career Resource Center 35 Rockdale County youth received training through Work Source Atlanta Regional's Career Resource Center 22 Rockdale County youth participated in Work Source Atlanta Regional's youth providers Work Experience program Securing a Competitive Economic Future ARC's Comprehensive Economic Development Strategy (CEDS) aims to foster economic prosperity across metro Atlanta with an emphasis on equity, resiliency, and addressing the needs of the region's underserved communities. CEDS strategies include: Positioning equity as the foundation for regional and local economic development initiatives Fostering business innovation by supporting the development of small and mid-sized businesses Ensuring the global and national competitiveness of metro Atlanta's economy Building on previous CEDS success to promote the economic resiliency and prosperity of all residents

REGIONAL IMPACT

Building Georgia T his partnership between ARC and the Technical College System of Georgia aims to provide workforce training to meet the surging demand for highly skilled construction workers. The program includes 'wrap-around' services for participants, such as childcare, transportation, and a stipend to lower some barriers of participation. ARC is the first Metropolitan Planning Organization in the nation to flex federal dollars to invest in workforce development. Clean Tech Academy ARC has received a 5-year, \$2 million federal grant that will enable the agency to partner with Goodwill of North Georgia to train 250 people to become EV technicians. The

grant will help expand Goodwill’s pilot Clean Tech Academy to locations across the Atlanta region, including Atlanta Technical College.

[2023 American Community Survey 1-Year Estimates](#)

Rockdale County, Georgia, has a range of infrastructure that supports its residents and businesses.

Transportation

- **Roads:** Major highways include Interstate 20 and U.S. Route 278, facilitating regional connectivity.
- **Public Transit:** The county is served by the Xpress commuter bus service, connecting to Atlanta and surrounding areas.

Utilities

- **Water and Sewer:** The Rockdale County Water Resources Department manages water supply and wastewater services.
- **Electricity:** Georgia Power and Walton EMC provide electrical services to residents.

Emergency Services

- **Fire and Rescue:** Rockdale County Fire Rescue offers fire protection and emergency medical services.
- **Law Enforcement:** The Rockdale County Sheriff's Office ensures public safety and law enforcement.

Education

- **Schools:** The Rockdale County Public Schools system operates several elementary, middle, and high schools.
- **Higher Education:** Nearby institutions include Georgia Piedmont Technical College.

Healthcare

- **Hospitals:** Rockdale Medical Center provides a range of healthcare services to the community.

Parks and Recreation

- **Facilities:** The County maintains several parks, trails, and recreational facilities for public use.

This infrastructure supports the growing population and enhances the quality of life in Rockdale County.

Points of Interest

Rockdale County has several sites listed on the National Register of Historic Places, including two districts in Conyers that incorporate numerous individually historic buildings. Among the others are Panola Mountain, a 100-acre granite mountain in a [state park](#), added to the register in 1976, and the Rockdale County Jail in Conyers, added in 1982 and now a museum.



Other places of interest in the county include **Randy Poynter Lake** at Black Shoals Park, a 650-acre **reservoir** and water sports recreation area stocked with many sport fish varieties; the Lewis Vaughn Botanical Garden, part of the revitalized downtown in Conyers; and the Haralson Mill Covered Bridge, completed in 1997 and the first of its kind to be built in the state since the 1890s. Perhaps the most well-known place in Rockdale County is the **Monastery of the Holy Spirit**, a Trappist monastery founded in 1944 on a 1,400-acre plantation once owned by the actress Colleen Moore. The monastery supports itself by selling religious books, art, and other products, and its store is open to the public. One of the newest attractions in the county is the Georgia International Horse Park, developed for the **1996 Olympics equestrian** events and mountain bike competition. Its 1,400 acres now host a wide range of events, from horse shows to wedding receptions.



CRIME IN ROCKDALE COUNTY

The crime rate in Rockdale County is **27.05 per 1,000 residents** in the typical year. Rockdale County Residents generally consider the southwest part of the county to be the safest.

[crimegrade.org › safest-places-in-rockdale-county-ga](https://crimegrade.org/safest-places-in-rockdale-county-ga)

The B- grade indicates that the rate of crime is slightly lower than that of the average US county. Rockdale County ranks in the 60th percentile for safety, meaning it is safer than 60% of counties but less safe than 40%. This analysis applies only to Rockdale County's official city boundaries. See the table below for nearby counties.

The crime rate in Rockdale County is 27.05 per 1,000 residents in the typical year. Rockdale County Residents generally consider the southwest part of the county to be the safest. Your chance of being a victim of crime in Rockdale County varies by area – ranging from 1 in 18 in the central areas to 1 in 55 in the southwest.

When looking at total crime counts (rather than per capita rates), the east parts of Rockdale County, GA see the most incidents – about 397 per year. In contrast, the west part of the county has the fewest, with approximately 242 crimes annually.

The Cost of Crime™ in Rockdale County, GA

The total projected cost of crime in Rockdale County for 2025 is \$47,558,345. This translates to approximately \$471 per resident and \$1,339 per household. On average, crime-related costs account for 1.3% of the median household income in Rockdale County.

These figures reflect only tangible costs, which include the following:

1. Criminal justice system costs (law enforcement, courts, and imprisonment): 51.5%
2. Direct costs to victims (damaged property, medical expenses, and lost wages): 36.8%
3. Lost economic contribution from offenders (time in prison or repeat offenses): 11.6%

The Cost of Crime per resident in Rockdale County is \$471 per year, which is \$7 more than the national average and \$22 more than Georgia's state average. Below we compare counties similar to Rockdale County:

- In Fulton County, GA, crime costs \$687 per person, which is \$216 more than in Rockdale County.
- In Forsyth County, GA, crime costs \$257 per person, which is \$214 less than in Rockdale County

The table below shows the total cost of crime to the residents of Rockdale County for the year 2025 along with the projected cost per resident.

CRIME	Cost to Clayton County	Cost per Clayton County Resident
Murder	\$16.0 Million	\$167
Rape & Sexual Assault	\$3.55 Million	\$35
Robbery	\$1.20 Million	\$12
Assault	\$7.27 Million	\$72
Kidnapping	\$1.11 Million	\$11
Vehicular Theft	\$4.0 Million	\$42
Burglary	\$1.96 Million	\$19
Theft	\$5.59 Million	\$55

Arson	\$155,665	\$2
Vandalism	\$3.28 Million	\$33
Animal Cruelty	\$77,169	\$1
Drug Crime	\$2.08 Million	\$21
Identity theft	\$199,869	\$2
Total Cost of Crime	\$47,558,345	\$471

The Intangible Cost of Crime in Rockdale County, GA

CrimeGrade primarily focuses on tangible costs, but the true impact of crime extends beyond economic. Pain and suffering for victims and their families are difficult to quantify, but research-based methodologies help estimate these effects.

Using these methodologies, we calculate that the intangible cost of crime in Rockdale County totals \$131,107,076 (\$1,300 per resident). When added to the tangible costs, this brings the total estimated cost of crime to \$178,665,421 (\$1,771 per resident

Rockdale County crime rates are measured per resident. Areas with high visitor traffic, such as shopping districts, may appear to have higher crime rates simply because more crimes occur where people gather – even if few residents live there. For example, the central part of the county has more retail establishments, which can artificially inflate crime rates in that area. Red areas on the map do not necessarily mean a neighborhood is unsafe for residents.

More issues arise with places like airports, parks, and schools. Major airports always look like high-crime locations due to the large number of people and the low population nearby. Parks and designated recreational areas, of which Rockdale County has 7, have the same problem. Of Rockdale County’s 100,884 residents, few live near recreational areas. Because many people visit, crime rates may

appear higher even for safe parks. Crime occurs where people gather, whether they live there or not. Before assuming an area is unsafe, consider both per-capita crime rates and total crime counts, as well as the types of destinations nearby

University system in Rockdale County

The Rockdale location provides classes for the GMC students in Rockdale County, Henry County, Newton County, and the surrounding areas. This allows students the opportunity to complete courses toward any one of our Associate or Bachelor of Applied Science degrees at a location closer to home.

The satellite location is located in the former Rockdale Board of Education Building, 1011 Rosser Street NW, Conyers, GA 30012. Rockdale students, faculty, and staff have full access to library resources from the main campus along with our local library media specialist.

Rockdale County School System

The **Rockdale County School District** (also referred to as *Rockdale County Public Schools* or *RCPS* for short) is a public school district in [Rockdale County](#), [Georgia](#), United States, based in [Conyers](#). It serves the communities of Conyers and [Lakeview Estates](#).

The current superintendent is Mrs. Shirley Chesser, who has been in this position since April 2025. The Rockdale County School District has eleven elementary schools, four middle schools, four non-traditional schools, and three high schools.

For the 2025 school year, there are 18 public schools serving **15,384 students** in Rockdale County School District. This district's average testing ranking is 4/10, which is in the bottom 50% of public schools in Georgia.

The high schools in Rockdale County have 4-year graduation rates ranging from **75.8% at Salem High School to 83.6% at Heritage High School**. Proficiency rates on the Georgia Milestones assessments vary widely, with some schools performing significantly below the state averages, particularly in Mathematics and Science

Childcare center in Rockdale

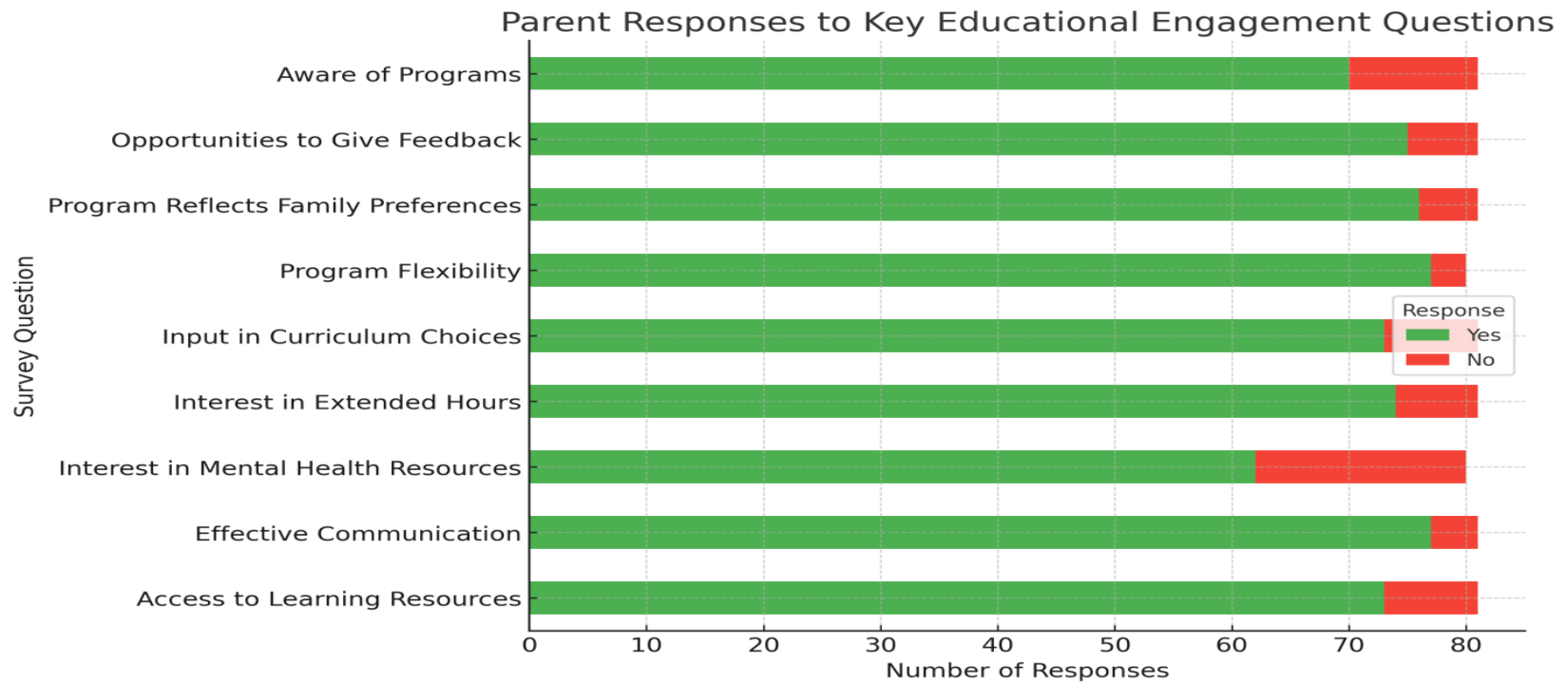
According to Childcare Center US, Rockdale County childcare centers come in sizes, costs, and programs to fit all budgets and preferences. We know that parents are busy but that selecting the right daycare center or preschool is crucial. So we've gathered basic information for **101** child care centers in Rockdale County into a single location so that you are only a click away from basic information such as address, size, and licensing information that can help you refine your search. You can narrow down your search even further by selecting a zip code or a city from the list below. Need more assistance? Simply contact the child care [referral agency](#) or the licensing agency listed on the right!

Childcare Center Search

Or

If your ZIP code is not in the dropdown list, use this link to see all [ZIP Codes in Rockdale County](#)

Our parents input in the development of the Community Assessment – 2024 -2025 School Year



Questions Asked in the Parent Survey:

1. Awareness of Educational Opportunities

Q: Are you aware of the different educational programs and services available?

Response Count Percentage- Yes 23 (100.0%)

Interpretation: All parents who completed the survey are aware of available programs.

2. Opportunities for Feedback

Q: Do you feel you have many opportunities to provide feedback on your child's educational experiences?

Response Count Percentage -Yes (22 95.7%) No (1 4.3%)

Interpretation: Almost all parents who completed the survey feel included in feedback process.

3. Decision-Making Reflection

Q: Do you believe our program design reflects family preferences?

Response Count Percentage -Yes 23 (100.0%)

Interpretation: Full agreement of those who completed the survey — families feel their needs are represented.

4. Flexibility in Educational Goals

Q: Does the program help families choose the best educational goals for their child?

Response Count Percentage -Yes 23 (100.0%)

Interpretation: Full agreement of those who completed the survey — families feel their child's educational goals are met.

5. Role in Choosing Curriculum

Q: Do you feel you have a part in choosing educational activities or curriculum?

Response Count Percentage -Yes 23 (100.0%)

Interpretation: Full agreement of those who completed the survey — families feel apart of their child’s educational activities or curriculum.

6. What Matters Most

Q: What matters most to you in our program?

Response Type -1st choice-Preferred Location, 2nd choice-Educational Approach, 3rd choice- Schedule , 4th choice Other/Unclear or Not Specified

7. Interest in Extended Hours

Q: If our program offered extended hours, would you be interested?

Response Count Percentage- Yes 20 (87.0%) No 3 (13.0%)

8. Interest in Mental Health Resources

Q: If our program offered mental health services/resources, would you be interested?

Response Count Percentage - Yes 14 (60.9%) No 9 (39.1%)

9. Effective Communication

Q: Is the communication regarding educational opportunities effective?

Response Count Percentage -Yes 23 (100.0%)

10. Preferred Communication Methods

Q: Which methods do you prefer for receiving information?

Method - Emails 1st choice, Text Messages 2nd choice and Paper/Other 3rd choice

11. Access to Learning Resources at Home

Q: Do you have access to resources to support learning at home?

Response Count Percentage - Yes 23 (100.0%)

12. Challenges Preventing Participation

Q: What challenges prevent you from participating more?

Challenges in Order

1st –Finances, 2nd –Transportation, 3 rd -Language Barriers, 4th -Work Schedule and Other -None/Not Listed

Summary:

Families who completed the survey in our program have identified:

1. Communication in our program is effective and families report to having access to learning resources at home. The best method and modality available to best engage with them through email and text messages. A strong awareness & participation of the educational programs and opportunities to give feedback.
2. They also largely feel the program reflects their preferences and offers flexibility and input in curriculum decisions. If our program were to extend hours and mental health resources, there is a very high percentage and interest in this approach.